

# Well instruments

## PVC pipes & well screens

Aquamerik produces PVC pipes and well screens. Our products are lightweight and their design is flexible and economical. Our PVC screens are manufactured with modern gears to get the most precise machining possible. Our manufacturing process provides an excellent consistency to openings width and to male & female threads.

To produce these screens and pipes, Aquamerik only uses PVC abiding by ASTM D1785 standard and "TFJ" threads honor ASTM F480-90 standard. Our pipes bound to environmental uses are cleaned up and packed up to avoid any contamination hazard.

Among the main uses, there are:

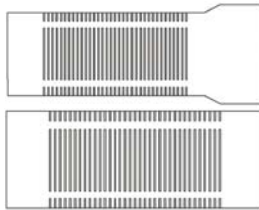
- Pumping wells
- Soils decontamination
- Water harnessing
- Drainage and drying out
- Well screens
- Steam heating - air or oxygen
- Bioremediation
- Degassing



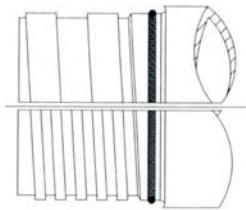
PVC well screen

PVC pipe

Also available:



Available threads:  
2, 3, 4, 8, 11½ tpi, 8 tours  
taper, 6 or 12 mm DIN.



### PVC well screens - Sch40 - TFJ thread

ITEM	DIAM.	LENG.	OPEN.	ROWS	PRICE
WS075-5-10	3/4"	5'	0.01"	2	21.85 \$
WS075-10-10	3/4"	10'	0.01"	2	29.90 \$
WS100-5-10	1"	5'	0.01"	2	21.85 \$
WS100-10-10	1"	10'	0.01"	2	31.05 \$
WS100-10-20	1"	10'	0.02"	2	31.05 \$
WS100-10-40	1"	10'	0.04"	2	35.65 \$
WS150-5-10	1½"	5'	0.01"	3	25.30 \$
WS150-10-10	1½"	10'	0.01"	3	37.95 \$
WS150-10-20	1½"	10'	0.02"	3	37.95 \$
WS150-10-40	1½"	10'	0.04"	3	44.85 \$
WS200-5-10	2"	5'	0.01"	3	31.05 \$
WS200-10-10	2"	10'	0.01"	3	37.95 \$
WS200-10-20	2"	10'	0.02"	3	37.95 \$
WS200-10-40	2"	10'	0.04"	3	44.85 \$
WS200-10-80	2"	10'	0.08"	3	44.85 \$
WS300-5-10	3"	5'	0.01"	4	74.75 \$
WS300-10-10	3"	10'	0.01"	4	100.05 \$
WS300-10-20	3"	10'	0.02"	4	100.05 \$
WS300-10-40	3"	10'	0.04"	4	113.85 \$
WS400-5-10	4"	5'	0.01"	4	79.35 \$
WS400-10-10	4"	10'	0.01"	4	113.85 \$
WS400-10-20	4"	10'	0.02"	4	113.85 \$
WS400-10-40	4"	10'	0.04"	4	131.10 \$
WS600-10-20	6"	10'	0.02"	6	242.65 \$
WS600-10-40	6"	10'	0.04"	6	281.75 \$
WS800-10-20	8"	10'	0.02"	8	380.65 \$
WS800-10-40	8"	10'	0.04"	8	437.00 \$

### Specifications:

- Construction: PVC (standard), CPVC, HDPE, PP.
- Length: up to 20 ft (standard 10 ft).
- Pipe diameter: 1/2" up to 24".
- Pipe type: Sch40 (standard), Sch80, SDR.
- Openings width: 0.006 and + (0.250 standard).
- Space between openings: 0.100 and + (0.250 standard).
- Threads possibilities: 2 TPI, 3 TPI, 4 TPI, 8 TPI, 11½ TPI, 8 tours taper, 6 or 12 mm DIN.

### To be specified for special orders:

- The inner pipe opening size.
- Openings width.
- Space between openings.
- Number of rows.
- Pipe type and its diameter.
- Screen's length.
- Edges thread type.
- Ask for our order form.

### PVC pipes - Sch40 - TFJ thread

ITEM	DIAMETER	LENGTH	PRICE
WS075-P-5	3/4"	5'	17.25 \$
WS075-P-10	3/4"	10'	25.30 \$
WS100-P-5	1"	5'	17.25 \$
WS100-P-10	1"	10'	25.30 \$
WS150-P-5	1½"	5'	18.40 \$
WS150-P-10	1½"	10'	29.90 \$
WS200-P-5	2"	5'	19.55 \$
WS200-P-10	2"	10'	31.05 \$
WS300-P-5	3"	5'	41.40 \$
WS300-P-10	3"	10'	67.85 \$
WS400-P-5	4"	5'	51.75 \$
WS400-P-10	4"	10'	74.75 \$
WS600-P-5	6"	5'	100.05 \$
WS600-P-10	6"	10'	156.40 \$
WS800-P-5	8"	5'	178.25 \$
WS800-P-10	8"	10'	244.95 \$

# Well instruments

## Well screens - Technical information



### PVC Sch40: Screens opening (square inches / foot) /// Standard construction

Pipe (inches)	Space (inches)	OPENING WIDTH (inches)									
		0.010"	0.015"	0.020"	0.025"	0.030"	0.040"	0.050"	0.060"	0.100"	0.125"
3/4"	3/16	0.84	1.22	1.59	--	--	--	--	--	--	--
1"	3/16	1.14	1.67	2.17	2.65	3.10	3.96	4.74	5.45	7.83	9.00
1 1/4"	3/16	1.71	2.50	3.25	3.97	4.66	5.93	7.11	8.18	11.74	13.50
1 1/2"	3/16	2.05	3.00	3.90	4.24	4.97	6.33	7.58	8.73	12.52	14.40
2"	3/16	2.51	4.00	5.20	6.35	7.45	9.49	11.37	13.09	18.78	21.60
3"	3/16	3.19	4.67	6.07	8.47	9.93	12.66	15.16	17.45	25.04	28.80
4"	1/4	3.12	4.58	6.33	7.77	9.16	11.79	14.25	16.55	24.43	28.50
5"	1/4	3.29	4.84	7.00	8.59	10.13	13.03	15.75	18.29	27.00	31.50
6"	1/4	3.23	8.15	10.67	13.09	15.43	19.86	24.00	27.87	41.14	48.00
8"	1/4	4.33	9.21	12.06	14.80	17.44	22.45	27.13	31.50	46.50	54.25

### PVC Sch80: Screens opening (square inches / foot) /// Standard construction

Pipe (inches)	Space (inches)	OPENINGS WIDTH (inches)									
		0.010"	0.015"	0.020"	0.025"	0.030"	0.040"	0.050"	0.060"	0.100"	0.125"
3/4"	3/16	0.65	0.94	1.23	--	--	--	--	--	--	--
1"	3/16	0.91	1.33	1.73	2.12	2.48	3.16	3.79	4.36	6.26	7.20
1 1/4"	3/16	1.48	2.17	2.82	3.18	3.72	4.75	5.68	6.55	9.39	10.80
1 1/2"	3/16	1.48	2.17	2.82	3.18	3.72	4.75	5.68	6.55	9.39	10.80
2"	3/16	2.16	3.17	4.12	5.56	6.52	8.31	9.95	11.45	16.43	18.90
3"	3/16	2.73	4.00	5.20	7.41	8.69	11.08	13.26	15.27	21.91	25.20
4"	1/4	2.42	3.57	6.00	7.36	8.68	11.17	13.50	15.68	23.14	27.00
5"	1/4	--	--	8.00	9.82	11.57	14.90	18.00	20.90	30.86	36.00
6"	1/4	--	--	9.00	11.05	13.02	16.76	20.25	23.52	34.71	40.50
8"	1/4	--	--	--	--	12.94	16.66	20.13	23.37	34.50	40.25

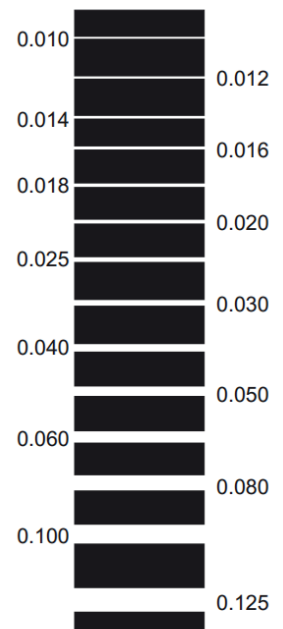
**Note:** This tab's results may slightly vary in consequence of pipes irregularity. Ask Aquamerik for different openings width. In order to determine the water harnessing rate in US GPM (gallon per minute) by strainer's foot length, just multiply this tab's numbers by 0.31. This result will indicate the strainer's water harnessing maximum capacity in ideal conditions at a 0.1 foot per second velocity. Specifications may vary without notice.



### Configuration - PVC well screens Sch40 and Sch80

Pipe (inches)	Openings spacing	Rows SCH40	TPI SCH40	Ø SCH40 I.D. / O.D.	Rows SCH80	TPI SCH80	Ø SCH80 I.D. / O.D.
3/4"	0.187"	2	8	0.810 / 1.050"	2	4	0.724 / 1.050"
1"	0.187"	3	8	1.033 / 1.315"	3	4	0.935 / 1.315"
1 1/4"	0.187"	3	8	1.364 / 1.660"	3	2	1.256 / 1.660"
1 1/2"	0.187"	3	8	1.592 / 1.900"	3	2	1.476 / 1.900"
2"	0.250"	3 - 4	2	2.049 / 2.375"	3 - 4	2	1.913 / 2.375"
3"	0.250"	3 - 4	2	3.042 / 3.500"	3 - 4	2	2.864 / 3.500"
4"	0.250"	4 - 5	2	3.998 / 4.500"	4 - 5	2	3.786 / 4.500"
5"	0.250"	5 - 6	2	5.017 / 5.563"	5 - 6	2	4.767 / 5.563"
6"	0.250"	6 - 7	2	6.031 / 6.625"	6	2	5.709 / 6.625"
8"	0.250"	8 - 9	2	7.943 / 8.625"	7	2	7.565 / 8.625"

### Openings



Spacing

1/4"



3/16"



1/8"



## PVC breathers

Our PVC breathers are specially manufactured for the petroleum industries and all applications where there is presence of underground tanks. It has to be installed vertically at the tank's end.

Easy visual inspection and samples collection for later analysis. Can also achieve an instant pumping in an emergency situation like a leak. It is recommended to install two breathers by underground tank.

Openings occupy 10 feet long of each breather and on the standard models, the diameter is 6 inches, openings are 0.032" and spaced by 1/4 inch.



ITEM	DIMENSIONS	SCH	PRICE
WSR200-15	2" x 15'	40	72.00 \$
WSR400-13	4" x 13'	40	120.00 \$
WSR600-13	6" x 13'	40	241.60 \$

## Well screens for submersible pumps

Specially designed to protect submersible pumps in wells, lakes, ponds, reservoirs, excavation and other places where there is a risk of clogging the pump.

Our screens are manufactured in standard Sch40 PVC and measure 4-inch in diameter by 5 feet long. Feature a cap specially developed to allow passage of a pipe of 1 inch, the electrical wiring (3/4") and a vent 1/2".

Since we are manufacturer, we can also make your custom-built screen for submersible pump.



ITEM	DIMENSIONS	OPEN.	ROWS	PRICE
WSS400-10-5	4" x 5'	0.010"	5	216.00 \$
WSS400-20-5	4" x 5'	0.020"	5	216.00 \$
WSS400-60-5	4" x 5'	0.060"	5	216.00 \$

## "Casagrande" piezometer

Our PVC "Casagrande" piezometer is excellent for metals sampling. The inside is made of a Vyon® tube protected by a PVC casing. This item suits for water level monitoring, permeability measures, construction, drying out operations and for hydric stability investigations.

To connect to a 3/4" diameter PVC pipe, standard length is 1 foot (2 and 3 feet also available).



ITEM	DIMENSIONS	OPENING	PRICE
PC-601	3/4" x 1'	60 μ	46.40 \$

## "Prefab" PVC well screens

Our "Prefab" PVC screens are an economical solution for the installation of wells in situations requiring non standard screens.

Most common applications are the development of angled and horizontal wells, artesian wells in stone, open excavations, fine and silty soils, industrial filtration and reconstruction of damaged wells.

The assembly consists of an inner strainer covered with an outer screen, the annular space between the screens allows the addition of a biofiltration media selected by application.

To reduce transportation costs and risks of breakage, prefab screens are delivered without internal media (sold separately).

Assembled from clean and free of glue materials. Available from 3/4" to 6" diameter in variety of lengths, openings and spacings to meet your application. Standard threads comply with ASTM F-480.

Male and female threads are compatible with our standard screens for a quick and simple connection.



ITEM	DIMENSIONS	SPACE	PRICE
WSP150075-5	1½" x 3/4" (5')	0.2710	88.92 \$
WSP150075-10	1½" x 3/4" (10')	0.2710	117.00 \$
WSP200100-5	2" x 1" (5')	0.3670	133.38 \$
WSP200100-10	2" x 1" (10')	0.3670	180.18 \$
WSP300200-5	3" x 2" (5')	0.3335	124.02 \$
WSP300200-10	3" x 2" (10')	0.3335	187.20 \$
WSP400200-5	4" x 2" (5')	0.8114	147.42 \$
WSP400200-10	4" x 2" (10')	0.8114	222.30 \$
WSP500400-5	5" x 4" (5')	0.3035	222.30 \$
WSP500400-10	5" x 4" (10')	0.3035	315.90 \$
WSP600400-5	6" x 4" (5')	0.7655	250.38 \$
WSP600400-10	6" x 4" (10')	0.7655	372.06 \$

## Other available well screens



TFJ male threaded strainer with rounded or hollow point



Strained HDPE pipe with TFJ ends

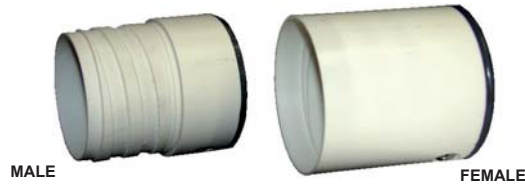


Strained PVC pipe with united ends

# Well instruments

Aquamerik offers a wide variety of fittings and PVC adapters to use with our strainers. Available with TFJ thread type (Threaded Flush Joint), insert or NPT, to respond to all situations. In addition, we added a few accessories making the installation easier. For all of these fittings, other sizes may be available upon request. We will be happy to confirm prices.

## TFJ caps



ITEM	DIAMETER	TYPE	PRICE
CTFJ-007M	3/4"	Male TFJ	10.06 \$
CTFJ-007F	3/4"	Female TFJ	10.06 \$
CTFJ-010M	1"	Male TFJ	10.97 \$
CTFJ-010F	1"	Female TFJ	10.97 \$
CTFJ-015M	1 1/2"	Male TFJ	12.62 \$
CTFJ-015F	1 1/2"	Female TFJ	12.62 \$
CTFJ-020M	2"	Male TFJ	10.79 \$
CTFJ-020F	2"	Female TFJ	10.79 \$
CTFJ-030M	3"	Male TFJ	19.45 \$
CTFJ-030F	3"	Female TFJ	19.45 \$
CTFJ-040M	4"	Male TFJ	24.50 \$
CTFJ-040F	4"	Female TFJ	24.50 \$
CTFJ-060M	6"	Male TFJ	32.75 \$
CTFJ-060F	6"	Female TFJ	32.75 \$

## Female caps



ITEM	DIAMETER	TYPE	PRICE
CF447005	1/2"	Female	0.35 \$
CF447007	3/4"	Female	0.45 \$
CF447010	1"	Female	0.75 \$
CF447015	1 1/2"	Female	1.05 \$
CF447020	2"	Female	1.33 \$
CF447030	3"	Female	3.98 \$
CF447040	4"	Female	11.24 \$
CF447060	6"	Female	18.85 \$
CF447080	8"	Female	53.15 \$

## Threaded flush joint



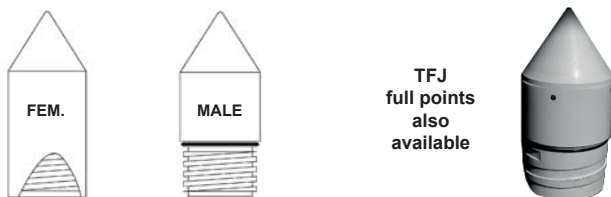
ITEM	DIAMETER	TYPE	PRICE
CMS-007	3/4"	Insertion	2.40 \$
CMS-010	1"	Insertion	1.90 \$
CMS-015	1 1/2"	Insertion	2.15 \$
CMS-020	2"	Insertion	4.40 \$

## Insert point



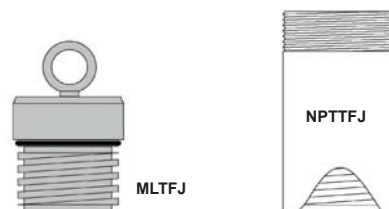
ITEM	DIAMETER	TYPE	PRICE
PIP-007	3/4"	Full	4.13 \$
PIP-010	1"	Full	13.72 \$
PI-015	1 1/2"	Empty	6.00 \$
PIP-015	1 1/2"	Full	19.20 \$
PI-020	2"	Empty	8.00 \$
PIP-020	2"	Full	28.00 \$

## TFJ points



ITEM	DIAMETER	TYPE	PRICE
PTFJ-007M	3/4"	Male TFJ	12.44 \$
PTFJ-007F	3/4"	Female TFJ	12.44 \$
PTFJ-010M	1"	Male TFJ	12.25 \$
PTFJ-010F	1"	Female TFJ	12.25 \$
PTFJ-015M	1 1/2"	Male TFJ	14.08 \$
PTFJ-015F	1 1/2"	Female TFJ	14.08 \$
PTFJ-020M	2"	Male TFJ	14.63 \$
PTFJ-020F	2"	Female TFJ	14.63 \$

## TFJ accessories



ITEM	DIAMETER	TYPE	PRICE
MLTFJ-020	2"	Male TFJ	67.44 \$
MLTFJ-040	4"	Male TFJ	188.20 \$
MLTFJ-060	6"	Male TFJ	139.19 \$
NPTTFJ-007	3/4"	NPT / TFJ	18.29 \$
NPTTFJ-010	1"	NPT / TFJ	19.08 \$
NPTTFJ-015	1 1/2"	NPT / TFJ	19.69 \$
NPTTFJ-020	2"	NPT / TFJ	22.15 \$
NPTTFJ-040	4"	NPT / TFJ	40.17 \$

# Well instruments

## Drive well points H.D.

- Heavy duty galvanized inner pipe.
- Stainless steel gauze and screen.
- Cast iron point.



40, 50, 80, 90 and 100 gauze available upon request.

ITEM	GAUZE*	Ø PIPE	PIPE LENGTH	PRICE
1720-1	60	1¼"	24"	169.70 \$
1721-1	60	1¼"	30"	183.76 \$
1722-1	60	1¼"	36"	198.00 \$
1723-1	60	1¼"	42"	213.79 \$
1724-1	60	1¼"	48"	242.09 \$
1725-1	60	1¼"	60"	276.47 \$
1740-1	60	1½"	24"	200.63 \$
1741-1	60	1½"	30"	226.20 \$
1742-1	60	1½"	36"	249.84 \$
1770-1	60	1½"	48"	390.58 \$
1775-1	60	1½"	60"	P.O.R.
1750-1	60	2"	24"	259.29 \$
1751-1	60	2"	30"	287.55 \$
1752-1	60	2"	36"	301.54 \$
1753-1	60	2"	48"	389.66 \$
1754-1	60	2"	60"	477.67 \$
1756-1	80	2"	24"	259.29 \$
1757-1	80	2"	30"	287.55 \$
1758-1	80	2"	36"	301.54 \$
1759-1	80	2"	48"	389.66 \$
1760-1	80	2"	60"	477.67 \$

(\* 60 gauze = 0.010", 80 gauze = 0.08").

## Economical drive well points

- Stainless steel gauze placed inside the pipe.
- Heavy duty external galvanized steel pipe.
- Cast iron point.



ITEM	GAUZE	Ø PIPE	PIPE LENGTH	PRICE
WP12-24-60M	60	1¼"	24"	67.32 \$
WP12-24-80M	80	1¼"	24"	67.32 \$
WP12-30-60M	60	1¼"	30"	75.94 \$
WP12-30-80M	80	1¼"	30"	75.94 \$
WP12-30-100M	100	1¼"	30"	75.94 \$
WP12-36-60M	60	1¼"	36"	85.64 \$
WP12-36-80M	80	1¼"	36"	85.64 \$
WP12-36-100M	100	1¼"	36"	85.64 \$
WP12-48-60M	60	1¼"	48"	111.05 \$
WP12-48-80M	80	1¼"	48"	111.05 \$
WP12-48-100M	100	1¼"	48"	111.05 \$
WP20-36-60M	60	2"	36"	140.70 \$
WP20-36-80M	80	2"	36"	140.70 \$
WP20-36-100M	100	2"	36"	140.70 \$
WP20-48-60M	60	2"	48"	170.54 \$
WP20-48-80M	80	2"	48"	170.54 \$

## Flush well points

Same diameter for point and pipe.  
40, 50, 80, 90 and 100 gauze available upon request.



ITEM	GAUZE	Ø PIPE	PIPE LENGTH	PRICE
1720-2	60	1¼"	24"	175.28 \$
1721-2	60	1¼"	30"	188.45 \$
1722-2	60	1¼"	36"	202.80 \$
1723-2	60	1¼"	42"	218.55 \$
1724-2	60	1¼"	48"	234.57 \$
1725-2	60	1¼"	60"	284.89 \$

## Well screens



ITEM	GAUZE	Ø PIPE	PIPE LENGTH	PRICE
1720-3	60	1¼"	24"	150.82 \$
1722-3	60	1¼"	36"	179.14 \$
1724-3	60	1¼"	48"	213.03 \$
1725-3	60	1¼"	60"	262.26 \$
1742-3	60	1½"	36"	213.53 \$
1770-3	60	1½"	48"	P.O.R.
1775-3	60	1½"	60"	P.O.R.
1750-3	60	2"	24"	227.84 \$
1752-3	60	2"	36"	274.53 \$
1753-3	60	2"	48"	358.26 \$
1754-3	60	2"	60"	446.31 \$

## Economical well caps



ITEM	SIZE	PRICE
1695	1¼"	30.84 \$
1697	2"	78.81 \$

## Drive point head - female thread



ITEM	SIZE	PRICE
1690	1¼"	29.84 \$
1693	1½"	43.06 \$
1694	2"	52.81 \$

## Drive point head - male thread



ITEM	SIZE	PRICE
1692	1"	P.O.R.
1691	1¼"	37.17 \$

## Galvanized steel coupling



ITEM	SIZE	PIPE TYPE	PRICE
941	1¼"	Standard	P.O.R.
942	1¼"	Pipe of 2"	12.39 \$
946	1¼"	Heavy Duty	31.09 \$
947	1½"	Heavy Duty	41.47 \$
948	2"	Heavy Duty	61.08 \$

# Well instruments

## Well plugs

Waterproof locking well cap. Fits on every Sch40 or Sch80 PVC pipe end. Easy to install and quick to remove. No metal parts but chemicals and temperature resistant properties. Possibility to add a padlock when necessary (**except for models BT-060 and BT-080**). Orange colored for greater visibility. Tethering attachment at base for a variety of instruments.

**VS series:** modified 2" and 4" BT caps to produce a vapor sampling cap. This specialized well cap uses a stainless steel valve which allows you to extract a sample of the trapped headspace vapors. **VP** sampling tube sold separately.

**EC-020:** A durable, tamper-proof well cap that will withstand repeated use (and abuse) over many years. Equipped with a magnetic lock, it activates with the help of a magnetic key.



ITEM	PIPE	SCH	PRICE
BT-005	1/2"	40 - 80	14.00 \$
BT-007	3/4"	40 - 80	14.00 \$
BT-010	1"	40 - 80	12.50 \$
BT-015	1 1/2"	40 - 80	12.50 \$
BT-020	2"	40	12.50 \$
EC-020	2"	40 - 80	36.00 \$
BT-028	2"	80	14.00 \$
VS-020	2"	40	36.00 \$
BT-025	2 1/2"	40 - 80	11.00 \$
BT-030	3"	40	27.90 \$
BT-040	4"	40	29.90 \$
VS-040	4"	40	45.00 \$
BT-048	4"	80	32.00 \$
BT-060	6"	40	45.00 \$
BT-080	8"	40	98.90 \$
VP	Sampling tube for VS series.		20.50 \$

## Manholes

Aquamerik offers manholes with or without Buna-N (Nitrile) seal and two mounting bolts in stainless steel to limit access to monitoring wells and easily access to plumbing. Our "high quality" aluminum manholes meet AASHTO standard (M306-89 standard) for a loading charge of 40,000 lbs. The skirt made from aluminum is welded for high durability and strength. Also available in plastic to meet various applications.



(\*) FRN = Fiberglass reinforced nylon.

(\*\*) Available with steel cover.

ITEM	DIMENS.	SKIRT	WATERPROOF	MATERIAL	PRICE
2SLW6	2" diam.	6"	Yes	Aluminum	60.32 \$
FM-306	3" diam.	6"	Yes	Plastic (FRN)*	59.00 \$
FM-408	4" diam.	8"	Yes	Plastic (FRN)*	86.00 \$
4SLW6	4" diam.	6"	Yes	Aluminum	52.00 \$
4SLW12	4" diam.	12"	Yes	Aluminum	61.20 \$
5SLW6	5" diam.	6"	Yes	Aluminum	60.84 \$
6SLW6	6" diam.	6"	Yes	Aluminum	58.24 \$
6SLW12	6" diam.	12"	Yes	Aluminum	76.96 \$
D109	6" diam.	9"	No	Plastic	34.78 \$
A0721-106A	6" diam.	8"	Yes	Cast iron	113.50 \$
8SLW12	8" diam.	12"	Yes	Aluminum	166.40 \$
A0721-208	8" diam.	12"	Yes	Cast iron	163.50 \$
10SLW12	10" diam.	12"	Yes	Aluminum	166.40 \$
D1100	10" diam.	10"	No	Plastic	35.04 \$
12SLW12	12" diam.	12"	Yes	Aluminum	187.20 \$
D1000	9" x 15"	10"	No	Plastic**	62.64 \$
D1200	12" x 17"	12"	No	Plastic**	102.36 \$
14SLW12	14" x 14"	12"	No	Aluminum	265.20 \$
D1500	15" x 21"	12"	No	Plastic**	106.32 \$
D750	15" x 21"	6"	No	Plastic**	61.86 \$
D600	17" x 11-7/8"	6 3/4"	No	Plastic**	55.84 \$
VBJMB	20" x 26"	12"	No	Plastic**	90.00 \$
242412	24" x 24"	12"	No	Rolled steel	849.08 \$
VBSPRH	24" x 33"	12"	No	Plastic**	427.48 \$
MAXH	27" x 40"	18"	No	Plastic**	1 188.72 \$



# Well instruments

## Locking well caps



ITEM	DIAMETER	WEIGHT	PRICE
412LKWC	4-1/2"	1.7 lb (0.8 kg)	33.00 \$
658LKWC	6-5/8"	2.1 lbs (1 kg)	42.00 \$
858LKWC	8-5/8"	2.7 lbs (1.2 kg)	77.00 \$
1034LKWC	10-3/4"	5.4 lbs (2.5 kg)	93.80 \$
1234LKWC	12-3/4"	6.5 lbs (2.9 kg)	100.00 \$

### Accessories:

HDPE-4	DR-21 HPDE pipe, size 4-1/2"	7.60 \$ / foot
HDPE-6	DR-21 HDPE pipe, size 6-5/8"	12.21 \$ / foot
834-102	40mm padlock #834	15.83 \$

## Conduit well caps



ITEM	DIAMETER	CONDUIT	PRICE
558CC1	5-5/8"	1"	20.00 \$
658CC1	6-5/8"	1"	20.00 \$
834CC1	8-3/4"	1"	23.50 \$

## Locking conduit well caps



ITEM	DIAMETER	CONDUIT	PRICE
6LKCC1	6"	1"	22.50 \$
834LKCC1	8-3/4"	1"	21.50 \$
10LKCC1	10"	1"	25.00 \$

## Well caps

- 1 hole, upper part in 1 piece.
- Manufactured in ABS.
- Zinc plated bolts.
- 3/4" rubber seal.



ITEM	Ø WELL INTERIOR	Ø PIPE HOLE	Ø CABLE HOLE	PRICE
1901	4"	1"	3/4"	32.60 \$
1911	4 1/4"	1"	3/4"	P.O.R.
1921	5"	1"	3/4"	45.72 \$
1931	5-5/8"	1"	3/4"	50.15 \$
1941	6"	1"	1"	50.71 \$
1951	6-1/4"	1"	1"	50.71 \$

\* Models also available with 3/4", 1 1/4", 1 1/2" and 2" pipe holes.

## Watertight well caps

• **SCP4, SCP5, SCP6:** 2 parts, upper part in thermoformed plastic, lower part in ABS, can be stuck to a PVC well.

• **WCP6:** 3 parts, upper part in thermoformed plastic, central part and fastening ring in aluminum, to use with steel or plastic wells.

• **SCPC6:** 2 parts, upper part in thermoformed plastic, to use with steel or plastic wells.



ITEM	DIAM.	COND.	LOCK	MAT.*	PRICE
658LKWT	6-5/8"	1"	Yes	A	28.75 \$
7WT	7"	1"	No	A	48.00 \$
7LKWT	7"	1"	Yes	A	98.00 \$
834WT	8-3/4"	1-4/4"	No	A	58.00 \$
834LKWT	8-3/4"	1-1/4"	Yes	A	122.00 \$
1034WT	10-3/4"	1-1/4"	No	A	79.00 \$
1234WT	12-3/4"	1-1/4"	No	A	96.00 \$
SCP4	4-1/2"	1"	Yes	T / ABS	46.85 \$
SCP5	5-9/16"	1"	Yes	T / ABS	53.04 \$
SCP6	6-5/8"	1"	Yes	T / ABS	64.05 \$
WCP6	6-5/8"	1"	Yes	T / A	P.O.R.
SCPC6	6-5/8"	1"	Yes	T	65.79 \$

(\* Cap material - A: Aluminum, T: Thermoplastic, ABS: ABS)

# Well instruments

## Modified clay

### MCM-830-55 (Modified clay)

MCM-830-55 modified clay is a media also known as "organic clay". Composition: 30% of organically modified bentonite and 70% of a special formula, a blend of anthracite coal and activated carbon.

Mainly intended for treating: hydrocarbons with a high molecular weight, chlorinated hydrocarbons and heavy metals.

Works well when installed upstream of an activated carbon filter to extend the duration and effectiveness of coal. Modified clay can absorb oils and fats and it won't clog. Can absorb between 30 and 60% of its weight.

#### Informations and instructions:

- Water level, ASTM D-2867: 10 - 15%.
- Particles size: 8 x 30 US Mesh.
- Density: 58 - 65 lbs / ft<sup>3</sup>.
- Contact time: 10 - 20 minutes.
- Treatment flow: 1 - 5 gpm / ft<sup>2</sup>
- Filtering layer thickness: 28 - 36 inches.
- Backwashes expansion: 10 - 20%.

ITEM	FORMAT	PRICE
MCM-830-55	Bag of 1 ft <sup>3</sup> , 55 lbs (24.9 kg)	145.00 \$

## Superior filter media

Aquamerik's glass pearls deliver outstanding water clarity. Manufactured from pure glass, these pearls are the new generation of filter media, capable of providing water of superior clarity. Its spherical shape results in low coefficient of friction, reducing backwash requirements. Glass pearls have been laboratory tested to be able to effectively filter down to below 3 microns.

They can backwash with up to 20% less water than sand, saving time and water. These pearls are manufactured from pure glass and chemically inert. They are easy to install and enables a rapid start up of the media filter. Its high purity means very little backwashing is required to cleanse the filter media, prior to commissioning the filter.



- High purity.
- Time saving.
- 3 micron filtration.
- 0.6 to 0.8 mm in size.
- 20% less backwash water.
- Uniformity coefficient: 1.21 / pearl.

ITEM	DESCRIPTION	PRICE
SA-W3532	Filter media - 20-kg bag (45 lbs)	65.33 \$

## Filtration sands & gravels

The Aquamerik filtration sand is composed of whole grains silica crystalline of a great hardness. They are durable and dense, which enables them to be resistant to degradation and gives efficient results. Used for building observation wells, pumping wells, extraction wells and other installations with PVC screens.

All sand grades are washed, dried and classified according to the most strict SPC quality control programs and QIP quality insurance program. Moreover, our sands and gravels meet AWWA B-100, ANSI and NSF-61 standards for filtration medias. These sands can also be used in the systems of industrial and municipal drinking water filtration. Shipped in 50, 55, 88 and 100 lbs bags, 3000 lbs available upon request.



- Relative density (ASTM C128): >2.50
- Acid solubility (AWWA B100): <5%
- Hardness (Mohs scale): 6-8
- Sphericity & roundness (API RP56): 0.6

ITEM	GRADING (mm)	GRADING (")	FORMAT	# BAGS / PALLET	PRICE
SA-370-88	0.075 - 0.300 mm	0.0030" - 0.0120"	88 lbs	35	P.O.R.
SA-00	0.30 - 0.50 mm	0.012" - 0.019"	50 lbs	60	13.90 \$
SA-324-88	0.30 - 0.85 mm	0.012" - 0.033"	88 lbs	35	P.O.R.
SA-526-50	0.35 - 0.45 mm	0.014" - 0.018"	50 lbs	60	P.O.R.
SA-507-50	0.45 - 0.55 mm	0.017" - 0.021"	50 lbs	60	19.00 \$
SA-520-50	0.65 mm	0.025"	50 lbs	60	13.05 \$
SA-1	0.75 - 1.30 mm	0.029" - 0.051"	50 lbs	63	11.31 \$
SA-516-50	0.80 - 1.20 mm	0.031" - 0.047"	50 lbs	60	17.43 \$
SA-509-50	0.90 - 1.60 mm	0.035" - 0.063"	50 lbs	60	20.78 \$
SA-529-50	1.40 - 1.66 mm	0.055" - 0.065"	50 lbs	60	19.10 \$
SA-320-88	1.4 - 2.3 mm	0.055" - 0.091"	88 lbs	35	19.60 \$
GR-510-50	1.6 - 3.2 mm	1/16" - 1/8"	55 lbs	60	15.80 \$
GR-512-100	3.2 - 6.4 mm	1/8" - 1/4"	100 lbs	30	37.00 \$
GR-511-100	6.4 - 12.8 mm	1/4" - 1/2"	100 lbs	30	37.00 \$
GR-513-100	6.4 - 19.0 mm	1/2" - 3/4"	100 lbs	30	37.80 \$
GR-515-100	19 - 38 mm	3/4" - 1 1/2"	100 lbs	30	41.80 \$



## Portland GU pure cement

The Portland general purpose pure cement is a high quality hydraulic binding agent mixed with raw materials of first choice. Made to be used with the majority of concreting works, it meets the demands for resistance at the required compression according to the CSA A3001-03 norm (A3004-C2 test method).

The Portland cement respects the CSA-A3000 norm. It is used for the formulation of highly resistant concrete & mortar and for other applications requiring general purpose cement.



ITEM	DESCRIPTION	PRICE
C30	Portland GU cement - 30-kg bag (66 lbs).	15.24 \$

## Bara-Kade

Bara-Kade is a sodium bentonite from Wyoming, high efficiency of prime quality (200 mesh), easy to mix. Bara-Kade gives viscosity, fluid loss control and gelling characteristics to freshwater based drilling fluids.

- Treated high purity sodium based bentonite.
- Easy to mix and yield a high viscosity mineral slurry.
- Provides a stable slurry without separation for longer periods.
- Compatible with cement and other construction additives.
- Also used in soil sealing and other hydraulic applications.



### RECOMMENDED TREATMENT

<b>Normal drilling conditions:</b>	15-25 lbs / 100 Gal
<b>Unconsolidated formations:</b>	35-50 lbs / 100 Gal
<b>Make-up for gel / foam systems:</b>	12-15 lbs / 100 Gal

ITEM	GRADE	FORMAT	PRICE
BK-200	200 Mesh	50-lbs bag.	23.00 \$

## Bentonite

This Wyoming bentonite is made to seal abandoned wells or any other installations requiring a vertical sealing that can prevent, in a borehole, water movement going to the top and infiltration by the surface.

When absorbing water, the bentonite swells itself in order to fill the empty spaces, exercising a pressure against all surfaces, thus creating a flexible seal with low permeability. Prevents entry of surface water into boreholes.

This product is universal. It is mostly used for repairing abandoned wells, seal above gravel packs, plug decommissioned boreholes, seal around conductor pipe & lost circulation zones, and shut off artesian flow.



	MEDIUM	COARSE
<b>Size:</b>	3/8"	3/4"
<b>Weight / volume:</b>	68.8 lbs / ft <sup>3</sup>	71.8 lbs / ft <sup>3</sup>
<b>Humidity rate:</b>	17%	17%
<b>Permeability:</b>	1.5 x 10 <sup>-9</sup> cm/sec	1.5 x 10 <sup>-9</sup> cm/sec

ITEM	DESCRIPTION	PRICE
MEDIUM	50-lbs bag of bentonite.	30.00 \$
COARSE	50-lbs bag of bentonite.	24.00 \$

## Cold asphalt

This cold asphalt (0° to 20°C) is a black colored coating mixed with a 0-5 mm aggregate blending and high quality bitumen.

Resistant against season changes, this product is ready-to-use for repairing potholes, cracks and gaps on all asphalt surfaces.

The 30 kg (66 lbs) bag of cold asphalt covers a volume of approximately 0.014 m<sup>3</sup> (0.5 ft<sup>3</sup>), so roughly a surface of 2 ft<sup>2</sup> at 3-inch of layer.



ITEM	DESCRIPTION	PRICE
ASPHALTE	Cold asphalt - 30-kg bag (66 lbs).	13.30 \$

## Benseal

Benseal granular, natural Wyoming sodium bentonite is used in sealing and grouting well casings and earthen structures.

Mud transforms itself into high-quality cement grout with low permeability. Aquamerik also offers polymers that can delay hydraulic process while still being compatible with this type of bentonite.

**BEN-200:** High purity sodium bentonite.

- High swelling capacity.
- Uniform particle size.
- Allows for hole re-entry.
- Improves green and dry strength.
- Prevents contamination from surface.
- Protects casing from corrosive contaminants.



ITEM	GRADE	FORMAT	PRICE
BEN-16	16 mesh	50-lbs bag.	21.50 \$
BEN-200	200 mesh	50-lbs bag.	21.50 \$

## Pellets bentonite

These granules are compressed untreated high yield bentonite pellets. Available in size of 3/8".

Allows to seal or cement plastic or steel casing. Isolate intervals between pipes grids, tools and substantive areas of sampling. The pellets offer protection between gravel filter and cement grout. High capacity of swelling when there is freshwater, followed by a delay before deflation.

Easy to remove and does not produce hydration heat. Can be rehydrated. Supplied in 50 pounds plastic buckets. Allows to seal below ground level:

- monitoring wells;
- dewatering and box holes;
- test holes done for soil samples.



ITEM	PELLET	FORMAT	PRICE
GRA-38	3/8"	50-lbs bucket.	110.00 \$

# Well instruments

## Sediment samplers

A variety of samplers are available for your specific needs in sampling. These sediment samplers can measure solid elements found in wastewater and chemical treatment plants, and food processing.

The lower section includes a spherical valve that allows liquid to enter in the unit once reduced in the sampler and seals it when raised from the liquid. The upper section has a nylon cord that helps during the sampling process. The central section links the upper and lower parts. Length of 15 feet for each sampler.

The **CP-B01386WA** has a UV stabilizer that reduces degradation of the material caused by UV radiations.



ITEM	DIMENSIONS	PRICE
CP-C09247WA	15' x 0.75" O.D.	274.00 \$
CP-B01386WA*	15' x 0.75" O.D.	427.00 \$
CP-B01355WA	15' x 1.25" O.D.	435.00 \$

(\* Model with UV stabilizer.

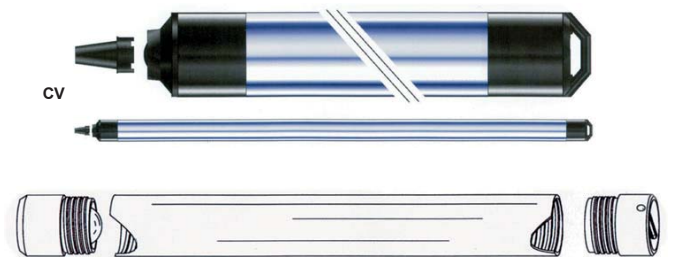
## Water samplers (bailers)

The PVC models are shipped with the handy pouring spout that helps transfer the samples without aerating them, ideal for a sample collection when analyzing volatile components. Furthermore, a better weight distribution allows our disposable samplers to go down more efficiently. Our disposable samplers (bailers) offer way more advantage compare to those made of polyethylene.

Made of clear PVC with an extreme stiffness, this material is heavier and more resistant compare to polyethylene. In fact, they are as heavy as the weighted models, therefore they go down faster.

**CV015-3P** is equipped with a weighing unit for deeper sampling. **CV015-3-H** is designed specifically for applications with hydrocarbon. We also offer PVC, stainless steel and teflon bailers on special order.

Sold by the unit (by default) or by box of 24 samplers.



ITEM	DIMENSIONS	MATERIAL	VOLUME	PRICE
CV005-3	0.5" x 3'	Clear PVC	80 ml	8.00 \$
CV007-3	0.7" x 3'	Clear PVC	200 ml	8.50 \$
CV015-3	1.5" x 3'	Clear PVC	1000 ml	9.10 \$
CV015-3P*	1.5" x 3'	Clear PVC	1000 ml	12.29 \$
CV015-3-H**	1.5" x 3'	Clear PVC	1000 ml	12.00 \$

(\* Weighted model.

(\*\*) Model for hydrocarbon.

## Hydrasleeves

Hydrasleeve is suitable for both short and long term groundwater monitoring and is especially useful in narrow, constricted or damaged wells. It makes it the option of choice for monitoring UST leaks, dry cleaning plants and other small scale point-source contaminant sites.



These samplers are inexpensive, disposable and very quick and easy to use, resulting in significant savings on capital equipment and operation costs when compared to other sampling equipment. The Hydrasleeve instantaneously "cores" a whole water sample from a defined vertical and horizontal interval (usually within the well screen).

Samples do not blend fluid from different vertical zones or pull water in from outside the well screen, but instead sample via ambient and/or diffusive flow of groundwater through the well screen. Ideal for narrow or damaged wells, they operate just like low-flow pumps.

The stainless steel weight of 8 ounces is reusable and can be fixed at the bottom of the Hydrasleeve. Available in 4 and 7 mil of thickness (**HS-1000A**).

### Specifications:

- Very simple to use.
- Inexpensive and disposable.
- Precise vertical and horizontal interval.
- Stainless steel weight reusable.
- Little to no gasification.
- Low level of well-water agitation.
- Samples can be analyzed for all desired parameters.
- SuperSleeve «**SS-1000/2000/4000**» models have a larger diameter, which increase filling capacities.

\* Sold by the unit or by box of 25 units.



ITEM	DIMENSIONS	Ø FILLED (empty)	VOLUME	PRICE / unit
HS-600	2.5" x 30"	1.5"	600 ml	37.70 \$
HS-1000	2.75" x 38"	1.75"	1000 ml	52.20 \$
HS-1000A	2.75" x 38"	1.75"	1000 ml	79.75 \$
SS-1000	3" x 36"	--	1000 ml	29.73 \$
HS-1600	4" x 30"	2.6"	1600 ml	47.49 \$
SS-2000	3" x 60"	5"	2000 ml	38.79 \$
HS-2500	4.61" x 37"	2.9"	2500 ml	66.70 \$
SS-4000	3" x 96"	--	4000 ml	61.63 \$
SW5	5 oz stainless steel weight.			19.00 \$
SW8	8 oz stainless steel weight.			21.03 \$
SW16	16 oz stainless steel weight.			40.60 \$

# Well instruments

## Tubing



ITEM	MAT.	I.D	O.D	FLOW	ROLL	PRICE
<b>LDPE &amp; TEFLON</b>						
LDPE1438-10	LDPE	1/4"	3/8"	Micro	100'	28.00 \$
LDPE3812-10	LDPE	3/8"	1/2"	Low	100'	31.00 \$
LDPE3812-50	LDPE	3/8"	1/2"	Low	500'	155.00 \$
LDPE1258-10	LDPE	1/2"	5/8"	Standard	100'	29.00 \$
LDPE1258-20	LDPE	1/2"	5/8"	Standard	200'	67.00 \$
LDPE1258-50	LDPE	1/2"	5/8"	Standard	500'	165.00 \$
TB-VOC-10	LDPE	0.17"	1/4"	--	100'	12.00 \$
TB-VOC-50	LDPE	0.17"	1/4"	--	500'	60.00 \$
FEP-25-125	TEFLON	1/8"	1/4"	--	100'	390.00 \$
FEP-25-125-20	TEFLON	1/8"	1/4"	--	200'	615.25 \$

<b>HDPE</b>						
HDPE1438-10	HDPE	1/4"	3/8"	Micro	100'	28.00 \$
HDPE3812-10	HDPE	3/8"	1/2"	Low	100'	31.00 \$
HDPE1258-10	HDPE	1/2"	5/8"	Standard	100'	29.00 \$
HDPE1258-20	HDPE	1/2"	5/8"	Standard	200'	67.00 \$
HDPE1258-50	HDPE	1/2"	5/8"	Standard	500'	165.00 \$
HDPE-081-10	HDPE	0.814"	1"	High	100'	96.00 \$
HDPE-081-20	HDPE	0.814"	1"	High	200'	192.00 \$
HDPE-081-30	HDPE	0.75"	1"	High	300'	310.00 \$
TB-VOC-10-H	HDPE	0.17"	1/4"	--	100'	12.00 \$
TB-VOC-50-H	HDPE	0.17"	1/4"	--	500'	60.00 \$

## Inertial pumps

### Low flow

The Low Flow System is designed to be used in small diameter piezometers (usually 3/4 to 1 inch of ID). It can provide flow rates of 1/2 gallon per minute and can lift water from up to 100 feet. Available in acetal plastic (model **D-13**) or in stainless steel (model **SS-13**).

### Standard flow

The Standard Flow System is the most popular inertial pump. This system is best suited for 2-inch monitoring wells and can provide lifts of up to 150 feet. Flow rates can be as much as 1 GPM. The most commonly used foot valve is the 1 inch OD, acetal thermoplastic (**D-25**).

Optional foot valves include the stainless steel 3/4 inch OD (**SS-19**) and the 5/8 inch OD (**D-16** and **SS-16**).

The Standard Flow is best used in wells of 1 to 2-inch (inside diameter).



ITEM	DIAM.	PIPE	DEPTH	FLOW	GPM	MATERIAL	PRICE
SS-10	3/8"	3/8" OD	75'	Micro	<1/2	Stainless steel	37.50 \$
D-13	1/2"	1/2" OD	100'	Low	<1/2	Delrin	21.60 \$
SS-13	1/2"	1/2" OD	100'	Low	<1/2	Stainless steel	50.00 \$
D-16	5/8"	5/8" OD	150'	Standard	<1	Delrin	14.90 \$
SS-16	5/8"	5/8" OD	150'	Standard	<1	Stainless steel	55.00 \$
SS-19	3/4"	3/4" OD	150'	Standard	<1	Stainless steel	112.10 \$
D-25	1"	5/8" OD	150'	Standard	<1	Delrin	6.25 \$
D-32	1 1/4"	1" OD	300'	High	<4	Delrin	21.00 \$
SS-32	1 1/4"	1" OD	300'	High	<4	Stainless steel	112.50 \$
WVW-1	Valve wrench for inertial pump.						3.10 \$

## Surge block

The surge block is an excellent wells development tool. Ask one of our technicians to make sure what surge block fits best with your inertial pump. A real useful and low cost tool for wells installation.



ITEM	DESCRIPTION	PRICE
SBD-15	Surge block 1" x 1 1/2" ø	10.00 \$
SBD-25	Surge block 1" x 1-7/8" ø	10.00 \$
SBD-32	Surge block 1-1/4" x 1-7/8" ø	10.00 \$
SBD-32-4	Surge block 1-1/4" x 3-7/8" ø	25.00 \$

## Disposable filters

Disposable filters from 0.2 to 5 microns. The unique open pleat geometry and 300 or 600 square cm surface area provide maximum media exposure while ensuring that even with the most turbid samples, you will not lose filtration media to blinding. Can be adapted with 3/8" (male threaded) and 1/2" (insertion) tubing sizes. Fits on water samplers (bailers) with the help of a 1/4" O.D. HDPE pipe.



ITEM	DESCRIPTION	PRICE
FMT-45	Disposable filters / 0.45 micron / 300 cm <sup>2</sup>	18.70 \$
FHT-45	Disposable filters / 0.45 micron / 600 cm <sup>2</sup>	18.25 \$
CAP300X2	Disposable filters / 0.2 micron / 300 cm <sup>2</sup>	19.25 \$
CAP600X2	Disposable filters / 0.2 micron / 600 cm <sup>2</sup>	20.90 \$
CAP300X1	Disposable filters / 1.2 micron / 300 cm <sup>2</sup>	19.25 \$
CAP600X1	Disposable filters / 1.2 micron / 600 cm <sup>2</sup>	20.90 \$
CAP300X5	Disposable filters / 5 microns / 300 cm <sup>2</sup>	19.25 \$
CAP600X5	Disposable filters / 5 microns / 600 cm <sup>2</sup>	20.90 \$

## High flow

The High Flow inertial pump system is designed to be used in 2-inch wells or larger, where a high pumping rate is desired or where very deep wells are encountered. This system is also an excellent well development tool in 2-inch piezometers.

Available in 1 1/4 inch OD, acetal plastic for the **D-32** model or in stainless steel for **SS-32**.

The High Flow System can provide lift of up to 250-300 feet in 2-inch monitoring wells and flow rates of up to 4 gallons per minutes.



# Well instruments

## Pump actuators

### Electrical automated lever (WHLP-II)

The Hydrolift-2 is a portable, electrically operated device that is used to automate the operation of the Inertial Pump. The Hydrolift is powered by a 3/4 horsepower electric motor (available in either 110 volts or 220 volts) and generates a 4-inch stroke at up to 200 cycles per minute. The Hydrolift-2 weighs only 35 pounds and requires an electrical power supply of at least 1000 watts. This actuator is optimized to operate with the Standard Flow System up to its maximum effective depth and will operate with the High Flow System up to a depth of 150 feet. This actuator is the ideal choice for the frequent user of inertial pumping systems.



### Gasoline automated lever (WPP-II)

The PowerPump-2 is the most powerful pump actuator you can find on the market. A Honda GX100, 2.5 horsepower, 4 stroke, gasoline motor powers this device. This actuator generates a 6-inch stroke and can operate both the Standard Flow System and High Flow System to their maximum effective depths. The PowerPump-2 weighs 70 pounds and usually requires two people to carry it. It is an excellent choice for those with extreme pumping requirements.



### Gasoline powered automatic lever (WPP-1)

The PowerPack (WPP-1) is powerful enough to lift water from over 60m (200 ft) depth using the Standard Flow System, and is so compact that it fits onto a back-pack frame. The WPP-1 incorporates clamps for High Flow and Standard tubing sizes (adapters are available for smaller tubes). A Honda GX-25 series, 1.0 horsepower, 4 stroke, gasoline motor powers this device, which can run for approximately 1 hour without refuelling. It is an excellent choice for those with moderate pumping requirements.



### Manual lever pump (WLP-100)

This Lever Pump is a manual lever designed to provide operators with a convenient, portable mechanism which would provide some mechanical advantage when manually operating the Inertial Pump as well as facilitating the collection of samples with this system. This actuator will fasten onto most above ground well completions quickly and easily. The tubing clamp is designed to accept Standard Flow, High Flow and Low Flow tubing and the handle is adjustable in order to accommodate various casing diameters and desired stroke lengths.



ITEM	SUPPLY	DEPTH	WEIGHT	PRICE
WLP-100	Manual	--	7 lbs (3.2 kg)	450.00 \$
WPP-II	Gasoline	300' (90m)	70 lbs (32 kg)	3 600.00 \$
WHLP-II	Electricity	150' (45m)	38 lbs (17.2 kg)	2 969.25 \$
WPP-1	PowerPack	200' (60m)	28 lbs (12.7 kg)	5 200.00 \$

### Electrical lever rental (WHLP-II):

ITEM	DESCRIPTION	PRICE
WHLP-II/JOUR	Electrical lever rental WHLP-II (1 day).	125.00 \$
WHLP-II/SEM	Electrical lever rental WHLP-II (1 week).	275.00 \$
WHLP-II/MOIS	Electrical lever rental WHLP-II (1 month).	625.00 \$

## Spectra Field-Pro battery powered peristaltic pump

"Spectra Field-Pro" (SFP-1) is a state of the art peristaltic pump that features a heavy-duty, all-inclusive design. This means no external cables, chargers or batteries to worry about. The EZ-Load pump head design prevents stretching or jamming of silicone tubing; no screws to handle. It also features an advanced electronic flow controller which maintains a steady flow rate regardless of battery voltage; will not cut out during low flow sampling. All cables are included for a power supply of 115 volts. The peristaltic pump measures 16.5" x 10.5" x 9" and weighs 29 lbs (13 kg). Compatible with "Masterflex" tubes #15 to 36 (silicone 3/8" to 5/8" of outside diameter). Flow can be adjusted between 50 and 1900 ml/min with a 3/8" OD silicone tube. The battery allows operation roughly between 9 and 14 hours depending of the flow. Shipped inside a heavy-duty storage compartment for field applications.



«Spectra Field-Pro»

ITEM	DESCRIPTION	PRICE
SFP-1	Spectra Field-Pro battery powered peristaltic pump.	2 200.00 \$
SFP-1/JOUR	Peristaltic pump rental SFP-1 (1 day).	75.00 \$
SFP-1/SEM	Peristaltic pump rental SFP-1 (1 week).	250.00 \$

### Replacement silicone tubes for SFP-1 (25 feet long):

ITEM	Ø INT.	Ø FITTING	FLOW (ml/min)	MAX. PRESSURE	MAX. VACUUM	PRICE
LS-15C	0.19"	3/16" (4.8 mm)	10 - 1000	25 psig	26" Hg	152.25 \$
LS-24C	0.25"	1/4" (6.4 mm)	17 - 1700	25 psig	26" Hg	174.00 \$
LS-35C	0.31"	3/8" (9.5 mm)	23 - 2300	20 psig	26" Hg	181.64 \$
LS-36C	0.38"	3/8" (9.5 mm)	29 - 2900	15 psig	24" Hg	203.50 \$

## Peristaltic pump 12 VDC

Designed to be used on the field, this reversible flow peristaltic pump is the ideal tool for vapor substance samplings and water samplings found in low-depth sources and on the surface. It can be used for vacuum and liquid or gas pressure. Compact and lightweight, the pump has no slot, grid or opening, so it makes it resistant against water contact; simple of use and easy to maintain and repair. The 12-foot power cable (4 meters) uses alligator clamps to allow an effective connection toward most power sources of 12 VDC that can provide at least 3 to 5 amps at maximal performance. This pump can be directly connected to your vehicle battery.



ITEM	DIMENSIONS	Ø TUBING	WEIGHT	PRICE
108592	13" le. x 5" wi. x 6.5" he.	3/8" O.D. or 5/8" O.D.	3.6 kg	1 314.00 \$

### Silicone tubes for 12 VDC peristaltic pump:

ITEM	DESCRIPTION	PRICE
105136	3/8" silicone tube for pump 108592, length of 20' (6m).	128.75 \$
105137	5/8" silicone tube for pump 108592, length of 20' (6m).	143.75 \$

## Bladder pump (stainless steel)

This stainless steel bladder pump provides consistent, accurate, reliable groundwater samples in all applications. Ensuring no air/water contact during operation, pumps are ideal for VOC (Volatile Organic Compounds) sampling. Inexpensive polyethylene bladders are also available. This pump is effective at any angle, to depths of 500 ft (150 m), and is ideal for low flow sampling. Available in diameters of 1" and 1.66". An electronic pump control unit (PCU-464) is also available in 125 or 250 psi versions. The pump control unit allows faster purge rates and precise low flow control to ensure a representative sample at 100 ml/min or less when sampling for VOCs.



PCU-464



ITEM	DESCRIPTION	PRICE
SBP-407-25	Pump in 316 stainless steel, Ø of 1".	510.00 \$
SBP-407-42	Pump in 316 stainless steel, Ø of 1.66".	752.00 \$
PCU-464-125	Pump control unit for SBP series, 125 psi.	1 709.00 \$
PCU-464-250	Pump control unit for SBP series, 250 psi.	3 515.00 \$

## Peristaltic pump for water sampling

- Small compact design and easy of use.
- Speed control from low to high speed.
- Reversible flow and prime/purge function.
- Samples from depths of up to 7.9 meters (26 feet).
- IP54-rated control panel protects against inclement weather and splashing water.
- Includes easy-to-load pump head.

- Maximum speed: 600 RPM
- Max flow rate: 1740 ml/min
- Voltage: 90 to 115/230 VAC
- Motor: 12 VDC
- Tubing sizes: 0.18", 0.25" (I.D.)



ITEM	DESCRIPTION	PRICE
PEZ-65-000	Peristaltic pump, 12 VDC motor.	2 305.10 \$
PEZ-15	Tube for pump - 0.18" interior diameter.	139.00 \$
PEZ-24	Tube for pump - 0.25" interior diameter.	139.00 \$